

Software Version	: 6.3.1.0504	Date	: 01.01.2007 3:39:19
Operator	: manager	Sample Name	:
Sample Number	: 079	Study	: Aminex RI(Sugars&alcohols)01
AutoSampler	: NONE	Rack/Vial	: 0/0
Instrument Name	: RI	Channel	: A
Interface Serial #	: 8289280011	A/D mV Range	: 1000
Delay Time	: 0.00 min	End Time	: 14.40 min
Sampling Rate	: 1.0000 pts/s		
Sample Volume	: 20.000000 µL	Area Reject	: 0.000000
Sample Amount	: 1.0000	Dilution Factor	: 1.00
Data Acquisition Time	: 01.01.2007 3:23:32	Cycle	: 1

Raw Data File : C:\PenExe\TcWS\Ver6.3.1\Temp\aminex ri

sugars&alcohols_3_18.12.09-20070101-032344.raw

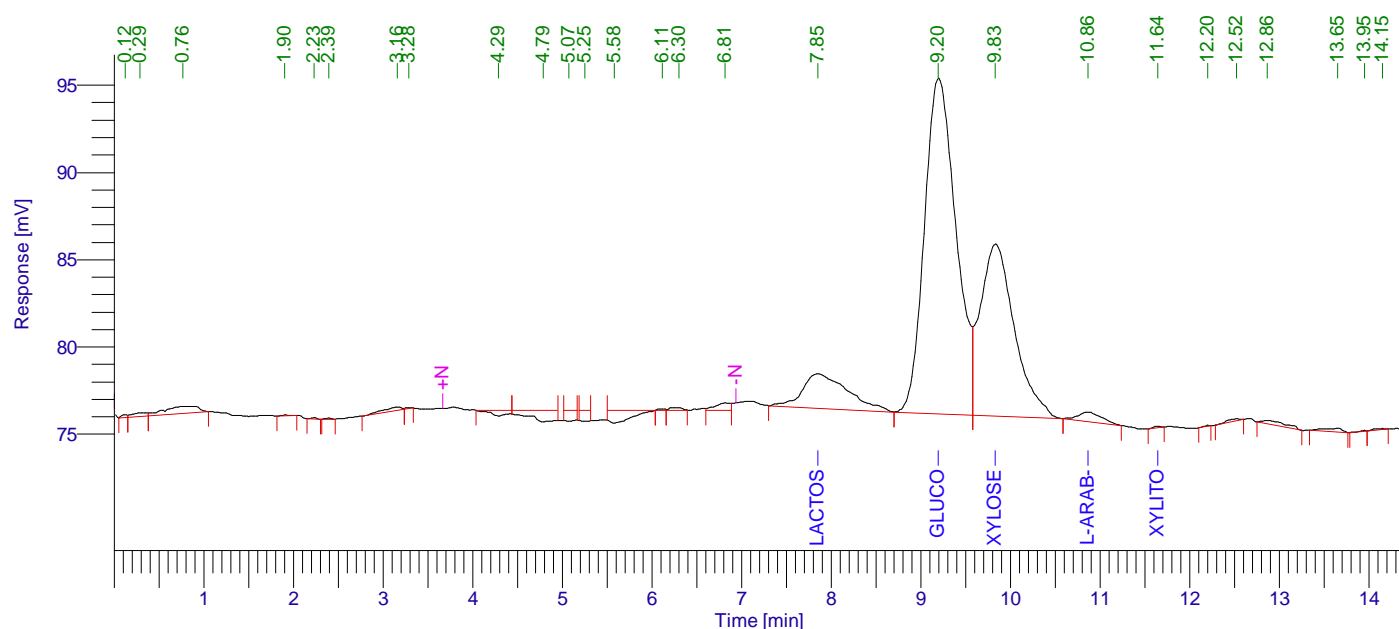
Inst Method : d:\hplc data\met\aminex ri(sugars)03+lactose from C:\PenExe\TcWS\Ver6.3.1\Temp\aminex ri
sugars&alcohols_3_18.12.09-20070101-032344.raw

Proc Method : d:\hplc data\met\aminex ri(sugars)03+lactose.mth from

Calib Method : d:\hplc data\met\aminex ri(sugars)03+lactose.mth from

Report Format File: d:\hplc data\met\aminex ri(sugars) 01 .rpt

Sequence File : D:\HPLC Data\Seq\Aminex RI (Sugars & alcohols) 01.seq



Aminex RI (Sugars) 01

Peak #	Component Name	Time [min]	Area [uV*sec]	Height [uV]	Area [%]	Norm. Area [%]	Raw amount g/L	Adjusted amount g/L
1		0.121	721.28	152.68	0.08	0.08	0.0000	0.0000
2		0.286	2383.35	201.15	0.27	0.27	0.0001	0.0001
3		0.764	10500.40	400.99	1.18	1.18	0.0005	0.0005
4		1.901	269.47	58.05	0.03	0.03	0.0000	0.0000
5		2.228	389.99	94.28	0.04	0.04	0.0000	0.0000
6		2.391	249.62	55.91	0.03	0.03	0.0000	0.0000
7		3.158	3422.52	197.78	0.38	0.38	0.0002	0.0002
8		3.284	312.76	61.35	0.04	0.04	0.0000	0.0000
9		4.286	4524.71	-329.19	0.51	0.51	0.0002	0.0002
10		4.785	14166.00	-664.65	1.59	1.59	0.0007	0.0007
11		5.072	5527.14	-644.46	0.62	0.62	0.0003	0.0003
12		5.248	5002.68	-637.42	0.56	0.56	0.0003	0.0003
13		5.575	13140.29	-732.87	1.48	1.48	0.0007	0.0007

01.01.2007 3:39:19 Result:

Peak #	Component Name	Time [min]	Area [uV*sec]	Height [uV]	Area [%]	Norm. Area [%]	Raw amount g/L	Adjusted amount g/L
14		6.114	319.68	53.19	0.04	0.04	0.0000	0.0000
15		6.302	1407.75	145.00	0.16	0.16	0.0001	0.0001
16		6.814	4844.93	409.54	0.55	0.55	0.0002	0.0002
17	Lactose	7.848	69724.39	1964.61	7.84	7.84	0.0054	0.0054
18	Glucose	9.197	470113.33	19237.10	52.88	52.88	0.7717	0.7717
19	Xylose	9.832	260907.23	9847.83	29.35	29.35	0.3320	0.3320
20	L-arab-se	10.864	10353.74	558.97	1.16	1.16	0.0009	0.0009
21	Xylitol	11.641	517.13	77.00	0.06	0.06	0.0162	0.0162
22		12.201	267.09	56.18	0.03	0.03	0.0000	0.0000
23		12.518	1363.10	104.25	0.15	0.15	0.0001	0.0001
24		12.864	4420.19	196.87	0.50	0.50	0.0002	0.0002
25		13.652	3281.71	246.16	0.37	0.37	0.0002	0.0002
26		13.949	306.65	47.46	0.03	0.03	0.0000	0.0000
27		14.147	539.85	47.90	0.06	0.06	0.0000	0.0000
			888976.98	31205.68	100.00	100.00	1.1300	1.1300

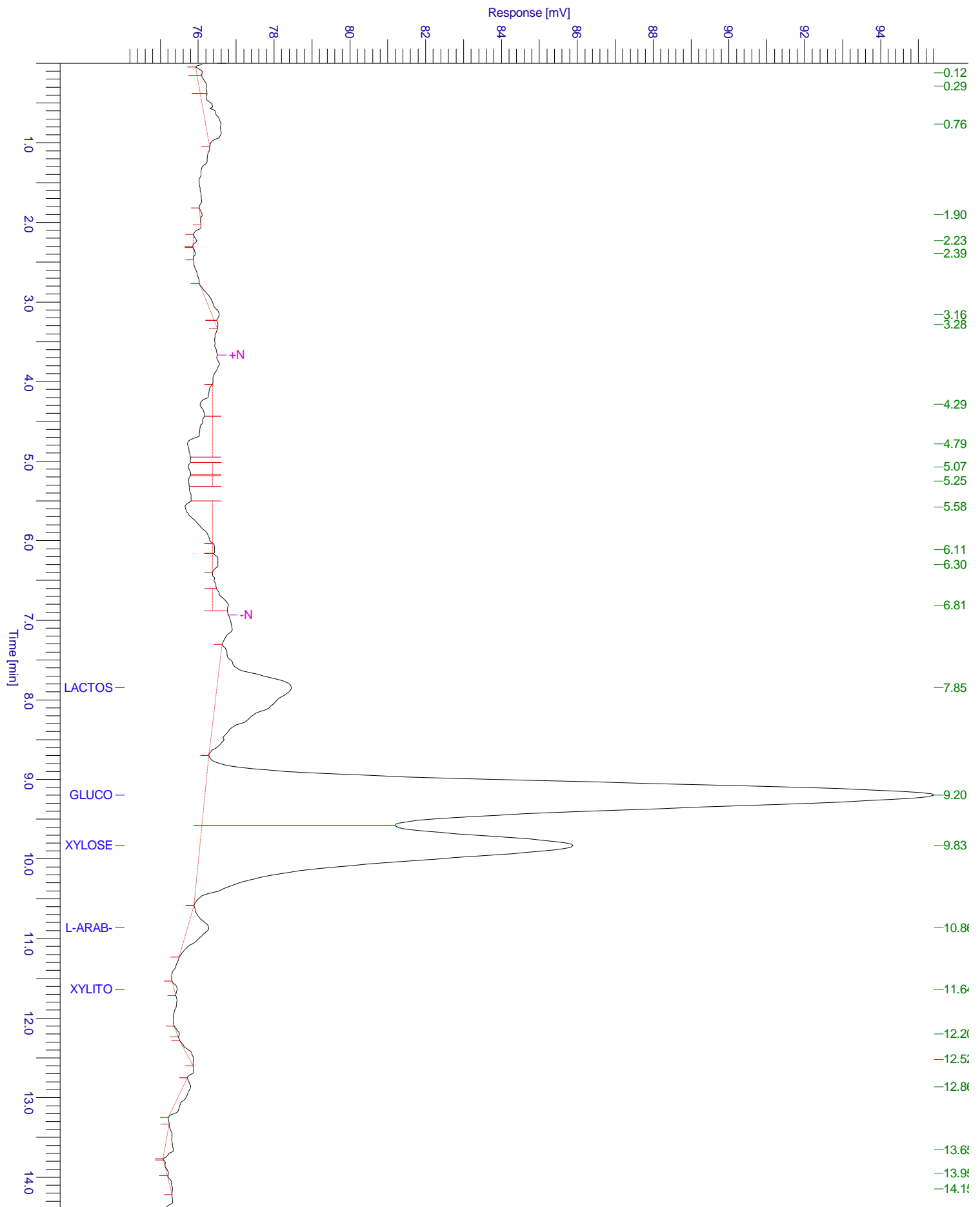
Missing Component Report

Component Expected Retention (Calibration File)

Cellobiose	7.626
Cucose	7.733
Lac-acid	13.126
Glycerol	13.350
Ac-acid	15.530
Acetone	18.522
Ethanol	20.121
Propanol	21.098
Isopropanol	22.119
Isobutanol	31.890
Butanol	34.050
Isoamyl	44.911
Amyl	57.198

Chromatogram

Sample Name : Sample #: 079 Page 1 of 1
FileName : C:\PenExe\TcWS\Ver6.3.1\Templaminex ri sugars&alcohols_3_18.12.09-20070101-032344.raw
Date : 01.01.2007 3:39:24
Method : aminex ri(sugars)03+lactose.mth Time of Injection: 01.01.2007 3:23:32
Start Time : 0.00 min End Time : 14.40 min Low Point : 74.06 mV High Point : 95.41 mV
Scale Factor: 1.0 Plot Offset: 74.06 mV Plot Scale: 21.4 mV



Chromatogram

Sample Name : Sample #: 079 Page 1 of 1
FileName : C:\PenExe\TcWS\Ver6.3.1\Templaminex ri sugars&alcohols_3_18.12.09-20070101-032344.raw
Date : 01.01.2007 3:39:24
Method : aminex ri(sugars)03+lactose.mth Time of Injection: 01.01.2007 3:23:32
Start Time : 0.00 min End Time : 14.40 min Low Point : 74.00 mV High Point : 95.41 mV
Plot Offset: 74.00 mV Plot Scale: 21.4 mV

